

# AUTOMATED SAND DUMP SYSTEM

CORTEC's Automated Sand Dump (ASD) System is engineered to help operators move out of the Red Zone by reducing manual intervention and enhancing safety at the wellsite. Designed with flexibility in mind, our system can be configured to meet your specific application needs and integrated seamlessly with CORTEC's growing lineup of chokes, valves, and control solutions. Whether you're automating a single dump or coordinating full-site operations, CORTEC delivers reliable, field-proven automation that supports efficiency, minimizes downtime, and reduces red zone exposure.

## SYSTEM

### Command Center Trailer Includes:

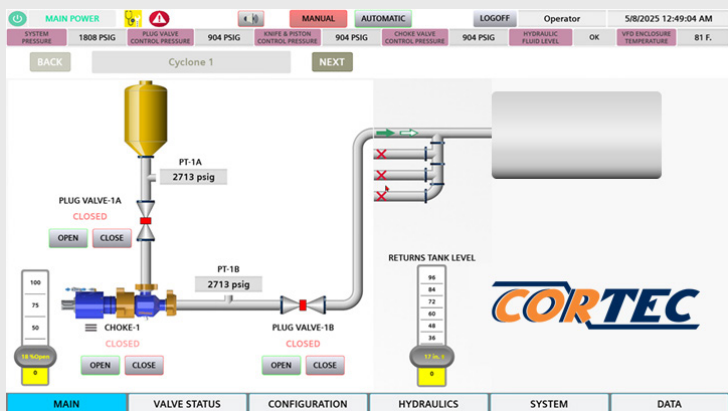
- Redundant Dual Electric Over Hydraulic Pump (230 VAC 1PH 30 AMP with Auto Start/Stop)
- Back-up Manual Hand Pump
- Dual Accumulator Bottles
- Hydraulic Control Circuits With Up To (14) Solenoid Control Valves, Designed To Operate The Following Equipment:
  - 4 Hydraulic chokes
  - 8 Hydraulic gate or plug valves
  - 2 Auxiliary functions



## MONITORING

### Hmi/Plc Control System Monitors The Following Instrumentation:

- (4) Upstream Choke Pressure,
- (4) Downstream Choke Pressure
- (1) Auxiliary 4-20 Ma Input
- (1) Hydraulic System Pressure
- (1) Choke Hydraulic Pressure
- (1) Valve Hydraulic Pressure
- (1) Auxiliary Hydraulic Pressure
- (1) Air Pressure
- (1) Low Reservoir Level
- Additional Functions, Data Logging, Remote Viewing And Control, Remote Data Access, And Remote Alarm Alert.



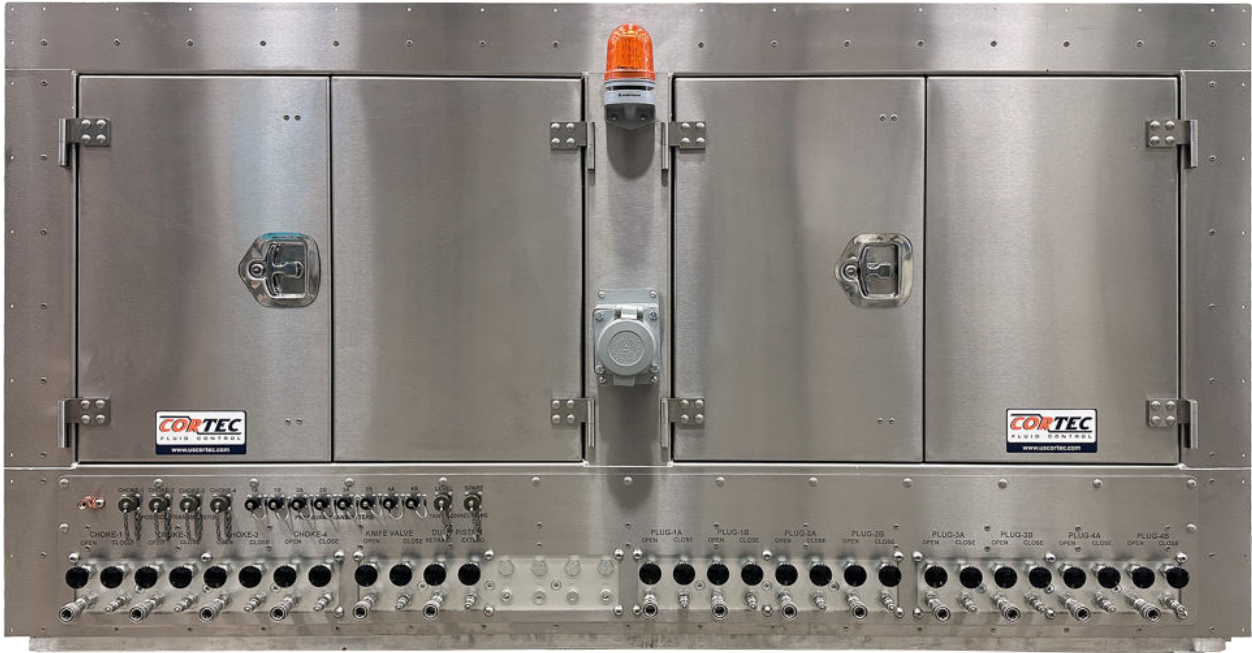
AMERICAN MADE. SUPERIOR GRADE.

CORTEC proudly operates two US based manufacturing facilities in Louisiana.

[uscortec.com](http://uscortec.com)

A004\_SD\_v1.04

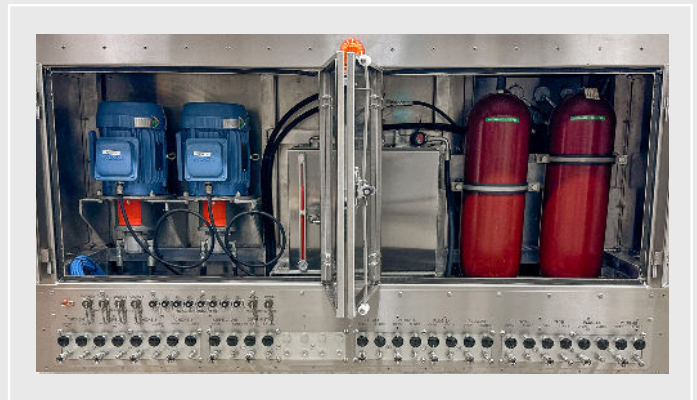
# AUTOMATED SAND DUMP SYSTEM



## CONTROL

In addition to manual jog for chokes and manual open/close for valves and auxiliary function, the control system would also perform the following automated timed control sequence for each dump circuit (well) *at user specified time intervals*:

- Downstream Valve Open
- Choke Open And Remain Open For User Specified Time Period
- Choke Close
- Downstream Valve Close
- Monitor Pressure Between Choke And Downstream Valve, Alarm If Pressure Present And Stop Further Operation For This Choke Circuit Until Reset After Choke Service.
- *Optional*: (2) Additional Auxiliary Hydraulic Functions Can Be Automated Upon Request



Our control systems are available to meet the following requirements: **API 16C, CE, ATEX, IEC, NORSOK, GOST, etc.**  
We can also supply control systems with third party design review and or witness testing, **ABS, DNV, Lloyds, Bureau Veritas, etc.**

Contact our expert **Sales Team** today for more info at **225-421-3300** or **sales@uscorotec.com**  
*No other manufacturer strives to exceed their customers' needs and expectations more than CORTEC.*



**CORTEC**

**AMERICAN MADE. SUPERIOR GRADE.**

[uscorotec.com](http://uscorotec.com)

*CORTEC proudly operates two US based manufacturing facilities in Louisiana.*

A004\_SD\_v1.04