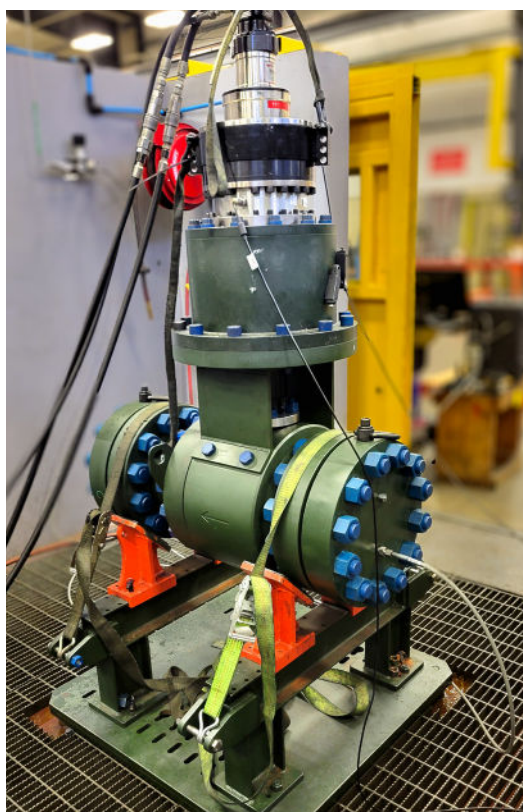
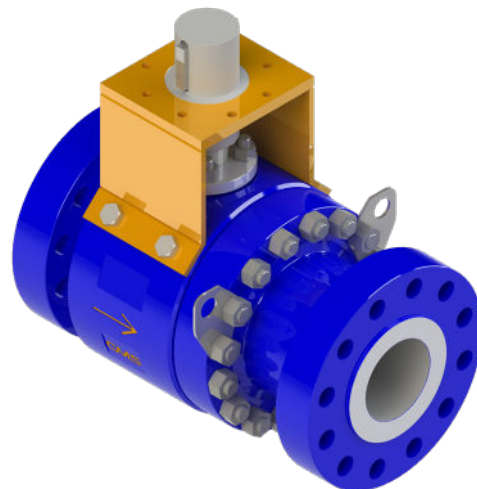


# XB EXTREME FLOATING BALL VALVE SERIES

## CRAFTED FOR CONFIDENCE

With extensive experience in high-pressure critical service ball valves, CORTEC is now bringing this expertise to the most demanding environments.

Utilized globally in the most critical upstream API 6A and 6D applications, CORTEC technology is field-proven and backed by a leading team of energy industry professionals. We are dedicated to offering the highest value possible to our clients through unmatched product quality and commitment to industry-leading customer service. We are proud to introduce the CORTEC XB Extreme Floating Ball Valve Series, which includes a range of models that can be tailored to suit your unique project requirements.



8" CL1500 Torque Validation Testing

## APPLICATIONS: MINING AND MINERALS

The high-performance XB Series ball valve line is designed for critical isolation applications in the mining and materials processing industry.

- Slurry transportation systems
- Pump suction and discharge isolation
- Pipeline choke stations
- Instrument isolation
- Vents and drains
- Pigging stations
- Tailings pipelines
- Emergency Shutdown

## VALVE DETAILS

- Sizes ½" to 24" (DN 15 to 600) | Bore Sized to Match Piping | Allowance for Pigs
- ASME / ANSI Class 150 to 4500 (PN 10 to 720) | API 6A Pressure Ratings Up to 5K Available Upon Request
- Flanged | RTJ | Butt Weld | Socket Weld | Hub
- End-to-End Dimension According to API 6D / ASME B 16.10
- Wide Variety of Material Selection Based on Application



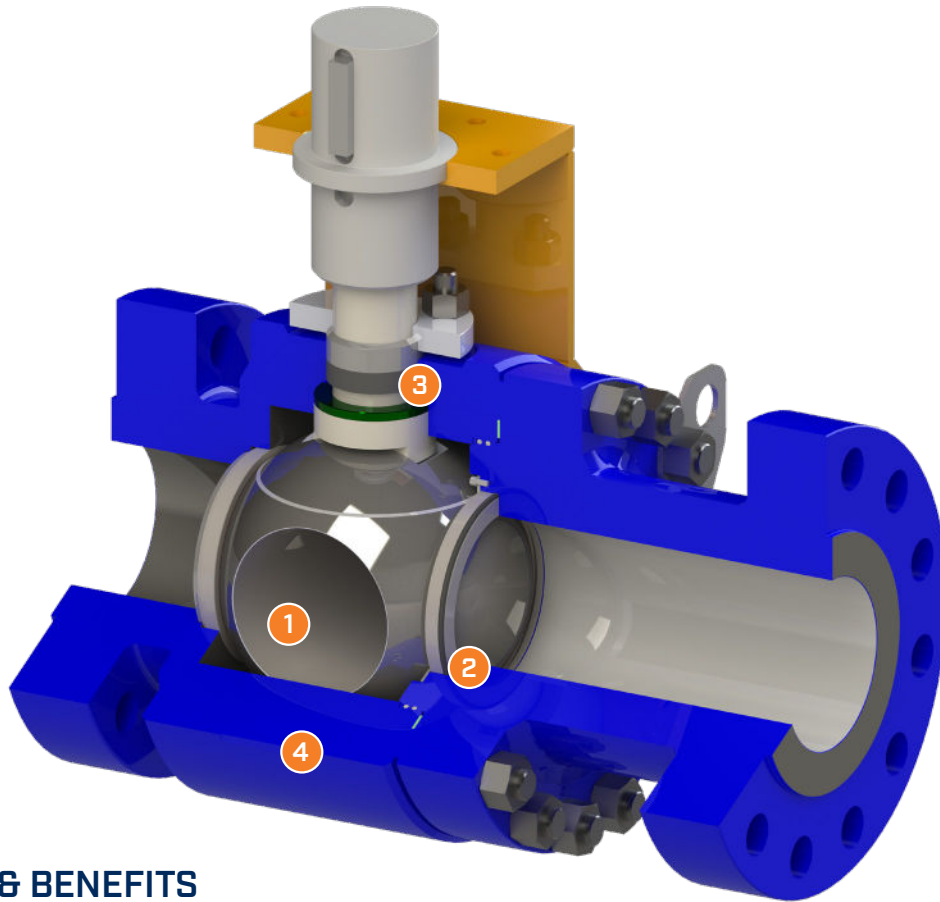
AMERICAN MADE. SUPERIOR GRADE.

[uscortec.com](http://uscortec.com)

CORTEC proudly operates two US based manufacturing facilities in Louisiana.

V007\_XBFBV\_v1.03

# XB EXTREME FLOATING BALL VALVE SERIES



## FEATURES & BENEFITS

### 1 BALL

- Floating ball design, fully supported by seat rings. Trunnion bearings are not required.
- Advanced wear-resistant thermal spray coatings applied to ball and seats
- Precision ground and mate lapped with seats to provide “bubble tight” shutoff

### 2 SEATS

- Independent replaceable seats to minimize life cycle costs
- Wide sealing area to lower the contact stress on the ball and withstand minor scratches
- Designed to wipe the ball sealing surface clean with each stroke
- Seat spring maintains constant sealing contact between ball and seats

### 3 STEM

- Robust one-piece blowout proof design meets industry safety standards
- Supported by inner and outer stem bearings to minimize lateral movement
- High performance packing, seals and gasket materials

### 4 BODY

- Wall thickness increased in critical areas to maximize life
- Corrosion-resistant overlay in seat pockets
- Mounting flange designed to support heavy operators

Contact our expert **Valve Sales Team** today for more info at **225-421-3300** or **[sales@uscortec.com](mailto:sales@uscortec.com)**.

*No other flow control manufacturer strives to exceed their customers' needs and expectations more than CORTEC.*



**AMERICAN MADE. SUPERIOR GRADE.**

**[uscortec.com](http://uscortec.com)**

*CORTEC proudly operates two US based manufacturing facilities in Louisiana.*

V007\_XBFBV\_v1.03