

# MPD MANIFOLDS

**CORTEC is setting industry standards with our compact, high performance manifold systems.**

CORTEC utilizes an extensive product line coupled with considerable manifold design experience to work with clients in developing MPD manifold systems to meet or exceed all project requirements.

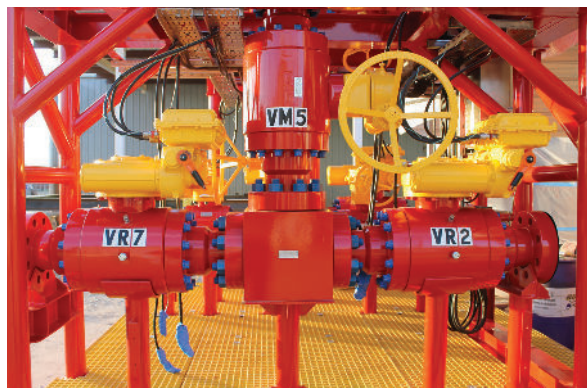
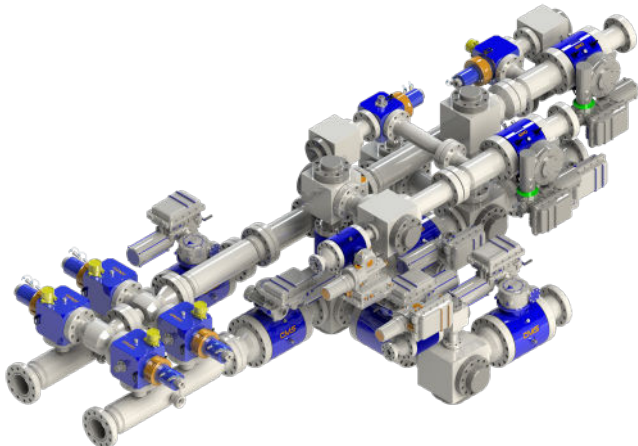
## DESIGN FEATURES AND BENEFITS

- Designs Featuring Large Bore Flow Lines up to 8"
- Up to 5,000 PSI MAWP
- Compact Ball Valves Available with:
  - › *Soft or Metal Sealing Technology*
  - › *Pneumatic, Hydraulic or Electric Actuation*
  - › *Single or Double Isolation Configurations*
  - › *Optional Corrosion Resistant Overlay for all Critical Valve Sealing Surfaces*
- All Equipment Compliant to API 6A PSL 3 as well as Optional 3rd Party Review
- Drilling Choke and Pressure Relief Control Panel Options Configurable to Operational Requirements and Customer Preferences.
- Drilling Chokes API 6A and 16C Monogramable

## COMPACT MPD MANIFOLDS

### COMPACT BUFFER MANIFOLD SYSTEMS

Our Compact Buffer Manifolds are designed for performance and efficiency in offshore environments with critical requirements and limited space availability. By utilizing compact ball valve and flowline components our design team can provide your rig with an advanced robust manifold system that provides for the high flow rate capacity needs of today's deep and ultra deep-water MPD operations. Additionally, our Pressure Relief Systems can be incorporated to protect personnel and equipment from system over-pressurization. CORTEC Compact Buffer Manifolds provide superior performance with significant space and weight savings when compared to traditional conventional gate valve systems. These systems can be installed to make any rig MPD capable while interfacing with any MPD manifold control system.



**CORTEC**

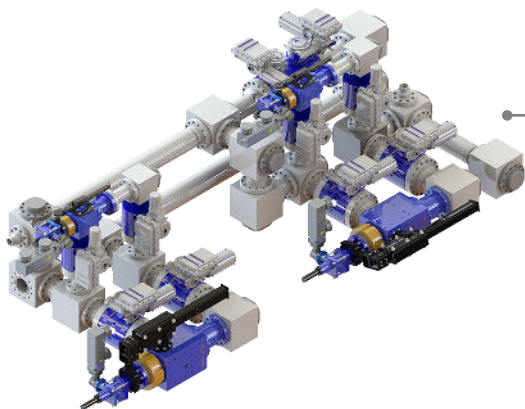
**AMERICAN MADE. SUPERIOR GRADE.**

[uscortec.com](http://uscortec.com)

CORTEC proudly operates two US based manufacturing facilities in Louisiana.

C012\_MPDM\_v.2.01

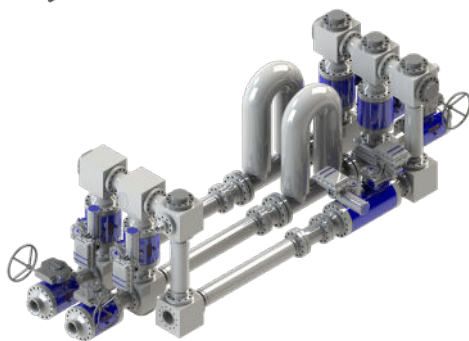
# MPD MANIFOLDS



## COMPACT CHOKE SYSTEMS

CORTEC Compact Choke Manifolds offer precise flow control capability while optimizing the use of deck space on a rig. CORTEC chokes, available in up to 6" orifice, are field proven to offer superior service and are capable of interfacing with any MPD control system.

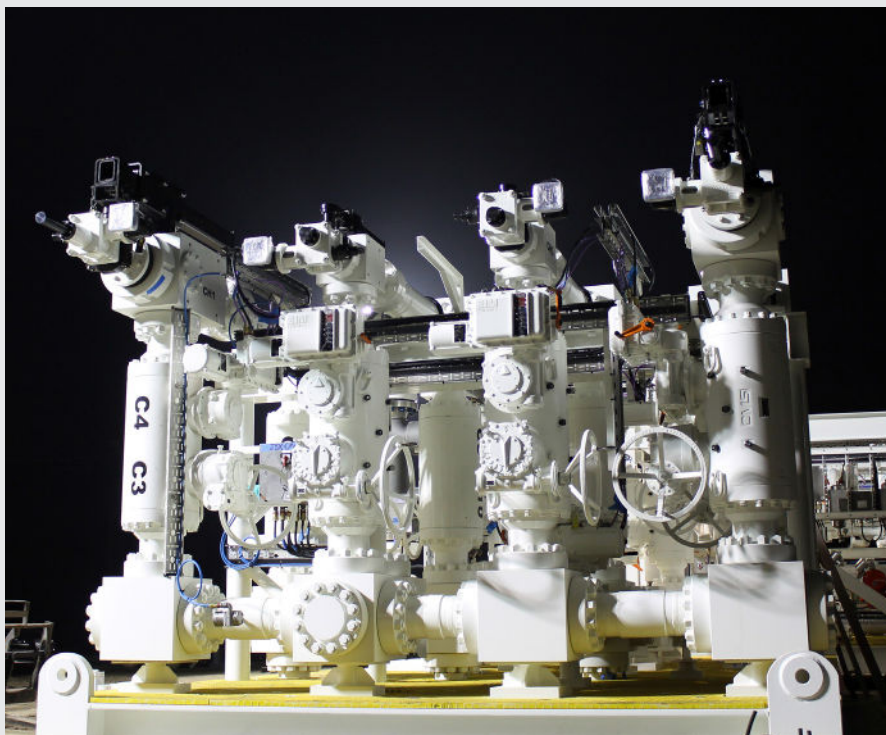
Options are available to accommodate a range of flow rate requirements and can be configured to user preferences.



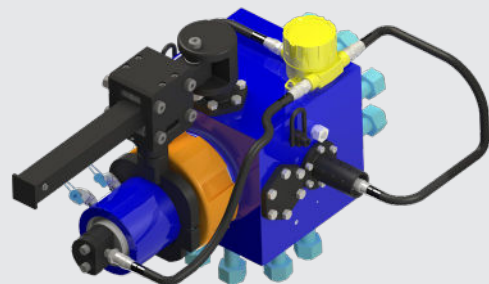
## COMPACT METER SYSTEMS

CORTEC can provide Compact Meter Manifolds with similar design and equipment configurations to our buffer and choke manifold systems. The meters, specified by the client, can be mounted in a horizontal or vertical position with isolation valves and flushing access points for ease of maintenance.

All manifold design options are highly adaptable to suit virtually any portable or permanent installation requirement. Contact CORTEC today for additional information on how we can optimize your equipment packages.



CORTEC Choke Manifold shown with two each 3" and 6" orifice chokes isolated by dual 7-1/16" compact ball valves.



CORTEC CX-RV4.0 4" Drifice Choke Relief Valve



CORTEC CX-6.0 and CX-3.0 Chokes.

Contact our expert **Sales Team** today for more info at **985-223-1966** or **sales@uscortec.com**

*No other manufacturer strives to exceed their customers' needs and expectations more than CORTEC.*



**CORTEC**

**AMERICAN MADE. SUPERIOR GRADE.**

[uscortec.com](http://uscortec.com)

CORTEC proudly operates two US based manufacturing facilities in Louisiana.

CO12\_MPD\_M\_v2.01