

API 16C CHOKE AND KILL CONTROL SYSTEMS

CORTEC manufactures a full line of API 16C Choke and Kill control systems to complement our choke and valve products. These designs, crafted by our experienced team, can be configured to suit a range of end user preferences. From single setpoint systems to conventional well control, CORTEC has the expertise and ability to provide a control console that meets your requirements. Choke and Kill manifolds vary in their design and can have multiple actuated chokes and valves. CORTEC will design a control system suited for each application.



CHOKE AND VALVE CONTROLS

- Local and Remote-control stations
- Multiple choke controls
- Multiple valve controls
- Analog and Digital control interface

HYDRAULIC POWER UNIT

- Dual or single air-driven or electric hydraulic pumps
(pump sized to meet specific choke requirements)
- Hand pump back up
- Available accumulators *(choke and valve specific, sized to meet customer specifications)*

CONSOLE FRAME

- Stainless or Carbon steel
- Stainless steel panel face
- Standard and custom sizes
- Sized to meet installation area



API 16C Monogrammed Systems



CORTEC

AMERICAN MADE. SUPERIOR GRADE.

uscortec.com

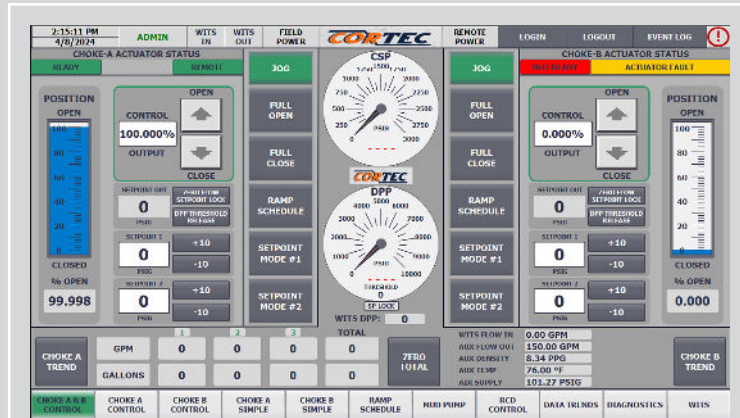
CORTEC proudly operates two US based manufacturing facilities in Louisiana.

A002_CKCS_v1.0

API 16C CHOKE AND KILL CONTROL SYSTEMS

INSTRUMENTATION

- Digital or analog pressure gauges
- Pump stroke counters
- Digital position indicator gauges
- Touch screen PLC systems



CX-EC - HMI Dual Choke Screenshot

LOCAL, REMOTE, AND AUTOMATIC CONTROL OPTIONS

- Local control of chokes and valves via manual DCV (*Directional Control Valves*) on local HPU
- Remote control of chokes and valves via manual DCV or HMI touchscreen
- Automatic choke control (*Setpoint Pressure Control*) via remote HMI touchscreen.
- Manifold P&ID and choke and valve position via HMI touchscreen
- Additional equipment controls and monitoring available



CX-EC 3.0 AUTOMATED CHOKE SETPOINT SYSTEM

Our control systems are available to meet the following requirements: **API 16C, CE, ATEX, IEC, NORSOK, GOST, etc.**
 We can also supply control systems with third party design review and or witness testing, **ABS, DNV, Lloyds, Bureau Veritas, etc.**

Contact our expert **Sales Team** today for more info at **225-421-3300** or **sales@uscortec.com**

No other manufacturer strives to exceed their customers' needs and expectations more than CORTEC.



AMERICAN MADE. SUPERIOR GRADE.

CORTEC proudly operates two US based manufacturing facilities in Louisiana.

uscortec.com

A002_CKCS_v1.0